



# JFS of Metrowest

2017 REPORT TO THE COMMUNITY

STAFF DRIVEN | VOLUNTEER POWERED | COMMUNITY INVESTED



**STANDING UP FOR THOSE LEFT BEHIND**



David Milowe, Board President and Marc Jacobs, Chief Executive Officer

*It was the best of times, it was the worst of times, it was the age of wisdom, it was the age of foolishness, it was the epoch of belief, it was the epoch of incredulity, it was the season of Light, it was the season of Darkness, it was the spring of hope, it was the winter of despair, we had everything before us, we had nothing before us...*

Charles Dickens wrote this over 150 years ago—in the opening to *The Tale of Two Cities*—



Max Michelson  
1924-2017

*In this season of darkness there are numerous days of turmoil, bigotry, violence. We write this message shortly after the vandalization of Boston's Holocaust Memorial, Charlottesville's neo-Nazi and white supremacist gathering culminating in murder, and Barcelona's fatal acts of terrorism. We witness the absence of moral leadership in The White House.*

*The attempted appeal of the Affordable Care Act and related Congressional efforts mark a potential historical milestone—the beginning of what is,*

*thus far, one of the most aggressive attempts at revoking a broad guarantee of social entitlements and protections for our elders, our children, for people with disabilities. The social safety net, if ripped further, will be difficult to repair; and it will be elders and children who will fall through it.*

*During these same days, we saw the passing of Max Michelson at age 92— mentor, friend, teacher, guiding light to so many of us. Max—Holocaust survivor, co-founder of JFS, community leader— provided wisdom and hope.*

*Marc often spoke with Barry Shrage, president of CJP, of how Max inspired each of us to be better, do better, never make excuses, always move forward. As Barry wrote, Max transformed a story of pain and torment into a commitment to justice, to ending pain and suffering and to defending the powerless.*

*Max had absolute clarity about what was important.*

### **Act. Stand up for those powerless, those without a voice.**

*Max's life experiences demonstrated that being embraced by a **caring and protective community** was essential to success and to personal well being.*

*JFS is proud to be our community's vehicle for acts of loving kindness. JFS is "staff driven, volunteer supported". It is a powerful combination. Our recently held annual Backpack events in Framingham and Wellesley brought together staff with over 100 volunteers—parents, young children and community members—who donated and filled **300+** backpacks with school supplies for low income, mostly young immigrant students.*

*35 volunteers are teaching Syrian refugees English; 75 more are involved in caring, demonstrating friendship and support to these newcomers. 50 Patient Navigator volunteers are preparing and accompanying frail elders to medical appointments. Dozens upon dozens contribute to the JFS Pop-Up Clothing Closet Project and Lucy and Joe's Food Pantry. All are "staff driven, volunteer supported".*

*JFS continues to move the needle across multiple domains with powerful and measurable impacts. JFS is:*

- *reducing poverty in the Jewish community*
- *increasing educational and social assets for immigrant children and families*
- *reducing social isolation and improving quality of life for frail elders*
- *implementing sophisticated performance measurements that quantify impacts*

*And all is being done in a fiscally responsible, in fact, extraordinarily effective manner. JFS has been awarded **4 Stars by Charity Navigator**, with a remarkable score of **96.74**.*

*We must be better, do better, never make excuses, always move forward. It is each's responsibility to join together with us to create new seasons of wisdom, light and hope.*

*Sincerely,*

Marc Jacobs  
Chief Executive Officer

David Milowe  
President





*Students at The Rashi School learn about the JFS Syrian Refugee Humanitarian Project*

**Through the power of volunteers,  
and with your partnership and investment, JFS is providing...**

**POVERTY REDUCTION**

in the Jewish community

**SOCIAL, EDUCATIONAL AND SUPPORTIVE PROGRAMS**

that help frail older adults live better, longer

**SAFETY, HOPE AND OPPORTUNITY**

to young victims of the Syrian war

**ACADEMIC ACHIEVEMENT AND PATHWAYS TO COLLEGE**

for low-income, first-generation students

**COMPREHENSIVE ASSISTANCE**

that empowers immigrant families to succeed

**VOLUNTEER ENGAGEMENT INITIATIVES**

that impact and strengthen our community

**PERFORMANCE MANAGEMENT**

that demonstrates effectiveness and impact



*Volunteer Diana Wainrib offers academic support to students in the All Stars extended day program*



## POVERTY REDUCTION in the Jewish community



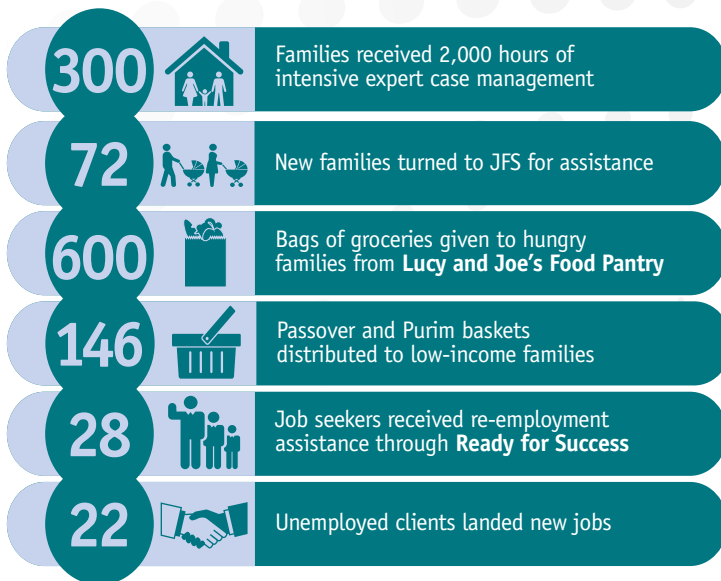
Volunteers from Wayland Children's and Parents' Association stock the shelves of Lucy and Joe's Food Pantry

JFS' multifaceted approach is reducing poverty significantly in the Jewish community. In partnership with CJP, Jewish Vocational Service (JVS) and other local agencies, JFS' **Family Assistance** case managers provide long-term, comprehensive support—from information and referral to employment readiness and financial support—to address the immediate needs of families in crisis, then continue the work to move them to stability and self-sufficiency.



Joanne Johansen from Kronos delivers holiday gifts for families in need

### IT ALL ADDS UP TO:



*Almost every part of our lives was touched by JFS—from fresh produce to academic tutoring, the food pantry, and job hunt support...We will always be grateful for the many forms of help we received from JFS.*

—Susan F., Client

# IMPACT!



## SOCIAL, EDUCATIONAL AND SUPPORTIVE PROGRAMS

that help frail older adults live better, longer



Staff Shoshana Savitz and Merrill Adler support clients as they age with case management and programs like Patient Navigator



Nurse Annette Alderman does a wellness check with a NORC resident

JFS is helping frail older adults maximize their independence and quality of life as they navigate the physical, emotional and financial challenges that come with aging. Through a wide array of programs coordinated with local Naturally Occurring Retirement Communities (NORCs), synagogues and senior centers, JFS facilitators and volunteers encourage healthy living, increase access to medical care, reduce social isolation and provide the support older adults need to live better, longer.

### IT ALL ADDS UP TO:

342



**Patient Navigator** clients assisted with medical appointments

525



Participants attended 149 **Healthy Aging** exercise and educational programs

55



Clients and their families worked with **Allies in Aging** geriatric care managers to develop care plans that maximize resources

145



Low-income elders received subsidized case management and financial support through **Family Assistance**

150



**Keshet** and **Keshet 13** participants engaged in faith-based activities at 9 residential care facilities

130



Clients received over 20,000 hours of **Homecare** services

1,320



**Friendly Visitor** hours reducing elder social isolation

100



Participants attended 6 **Memory Cafés** for people living with dementia

92



Clients that speak Russian, Spanish or Chinese as their primary language

*As a JFS Patient Navigator, I am able to provide the emotional and practical support that helps people achieve better outcomes; support that makes a real difference for people who need it the most.*

—John Cox, Retired Social Worker

# IMPACT!



# JFS SYRIAN REFUGEE HUMANITARIAN PROJECT

providing safety, hope and opportunity to young victims of the Syrian war

Photos: Susan Kreiter, Boston Globe



Staff Nermin Helaly welcomes a Syrian family to Boston

The war in Syria has forced over 5 million refugees to flee the violence—families desperate to find safety; parents determined to build a future for their children.

In response to this crisis, JFS is leading the **JFS Syrian Refugee Humanitarian Project**, a coalition of partner organizations from area synagogues, Islamic centers, academia and the medical community. JFS case managers, with the support of hundreds of volunteers and donors, are resettling families from Syria and helping them overcome the challenges New Americans face when building a life in the United States.

These families are on the path to self-sufficiency and JFS will resolutely stand by these young victims of the Syrian war, every step of the way.

## IT ALL ADDS UP TO:



# IMPACT!



.....

*As Jews we know what it's like to be pushed out of a country, to be treated with ill intention, and that makes us have an obligation to help those that we can.*

.....

—Rabbi Elaine Zecher, Temple Israel of Boston



Rabbi Elaine Zecher

.....

*You shall love the stranger, for you were strangers in the land of Egypt.*

.....

—Deuteronomy 10:18-19

# JFS SYRIAN REFUGEE HUMANITARIAN PROJECT continued

Photo: Susan Kreiter, Boston Globe



Volunteer Edward Shapiro greets a Syrian family at Logan Airport

**Faith-based collaborations have been extraordinary. Many of the individual volunteers from the faith based institutions are acknowledged in the volunteer listings. JFS is proud to recognize:**

Congregation Kehillath Israel with Congregation  
Mishkan Tefila-Brookline  
First Parish-Lincoln  
Islamic Society of Boston, Wayland  
Masjid-E-Basheer (Islamic Society of Framingham)  
St. Peter's Episcopal-Weston  
Temple Beth Am-Framingham  
Temple Beth Elohim (Syrian Refugee  
Resettlement Committee)-Wellesley

Temple Beth Shalom-Needham  
Temple Beth Shalom-Framingham  
Temple Emanuel-Newton  
Temple Israel- Boston  
Temple Israel-Natick  
Temple Shalom-Newton  
Temple Sinai-Brookline  
Village Church-Wellesley

**JFS has strong, committed partnerships throughout academia, government, healthcare, workforce development, business and community organizations. JFS is proud to recognize:**

American Jewish Committee-New England  
American Arab Benevolent Society  
Boston Medical Center  
Combined Jewish Philanthropies  
Congressional Offices of Representatives Capuano,  
Clark and Kennedy  
Framingham Adult ESL+ and the Framingham  
School Department  
Framingham State University  
HIAS  
JCCs Greater Boston  
Jewish Vocational Service

Massachusetts Office of Refugees  
and Immigrants  
Metrowest Medical Center  
Reebok/Adidas  
Shapiro Foundation  
State Representative Offices of  
Representatives Lewis and Walsh  
State Senate Offices of Senator Spilka  
Syrian American Medical Society  
Trip Advisor  
Tufts Hillel and Tisch College  
at Tufts University  
William James College

## AWARDS



Joukowsky Family Foundation  
2017 Sharp Rescuer Prize Recipients

Photo: Susan Kreiter, Boston Globe



Marc Jacobs, CEO



Staff Lucia Carballo Panichella



Supporters Edward & Barbara Shapiro

William James College  
2017 Mental Health  
Humanitarian Award Recipient

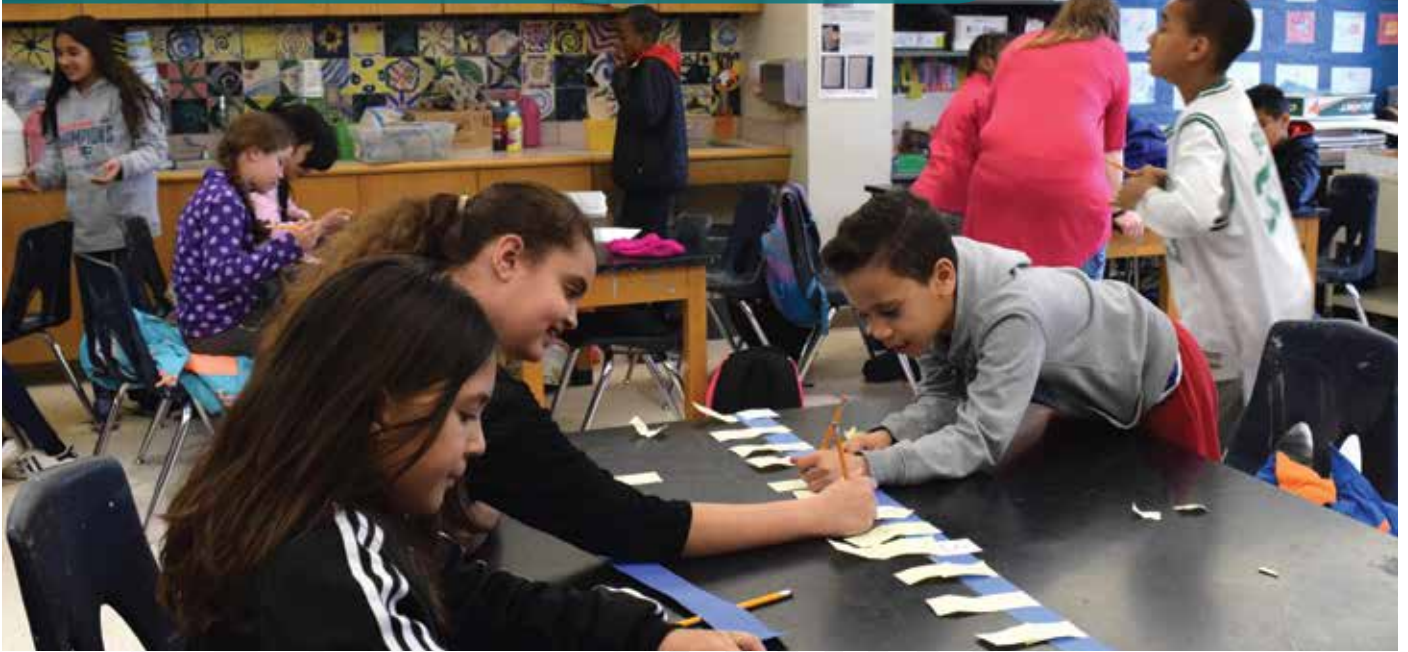
Marc Jacobs

**JFS provides life changing  
services to  
so many, in  
the Syrian  
refugee community  
and beyond. We are  
inspired every day by  
their leadership and staff.**

—Barbara Shapiro,  
Volunteer and Board Member



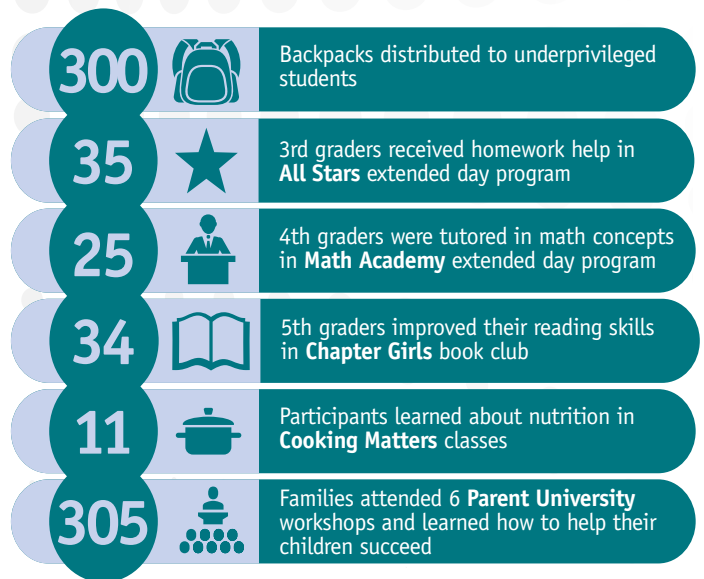
## ACADEMIC ACHIEVEMENT AND PATHWAYS TO COLLEGE for low-income, first-generation students



Hands-on experience with fractions in Math Academy

JFS is giving our community's most economically and educationally challenged school-age children and their families the support they need to succeed in school and in life. In collaboration with the Woodrow Wilson Elementary School, Framingham State University and Mass Bay Community college, JFS' **Reducing Achievement Gaps** coordinators and volunteers provide extended day learning that reinforces lessons taught in the classroom and educational programs for parents to maximize involvement.

### IT ALL ADDS UP TO:



## IMPACT!



*When a student receives a backpack, a bag of food, new snow boots, you see the difference those things make, you see the joy in their face and the relief in their parents.*

—Kayla Hopkins, Program & Volunteer Operations Manager





# COMPREHENSIVE ASSISTANCE

that empowers immigrant families to succeed



Pop-Up Clothing Closet at Wilson Elementary School



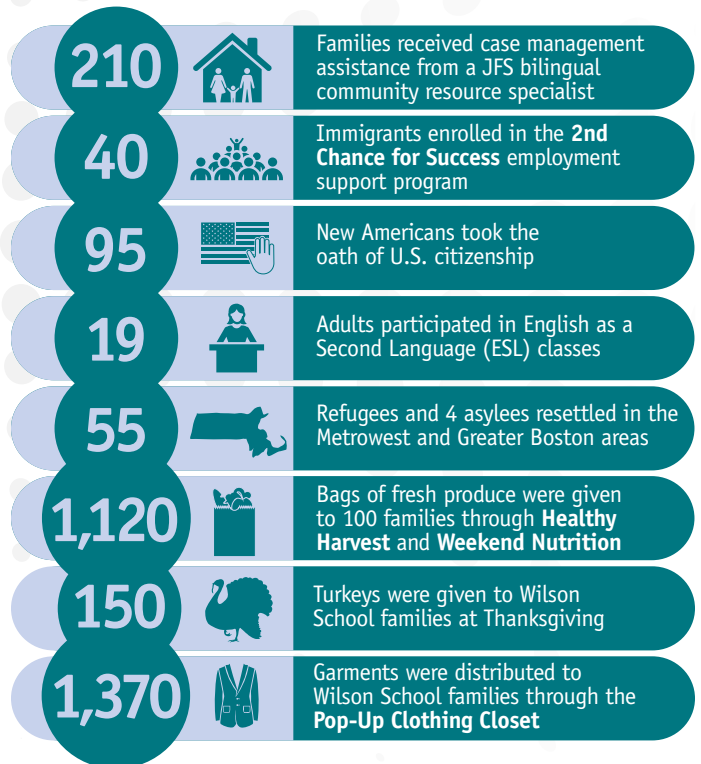
Volunteer Barbara Gainsboro teaches English as a Second Language to Russian-speakers

Today's immigrant families face many challenges, and JFS is developing innovative, integrated resources that address the social, emotional and financial needs of New Americans as they adapt to their new surroundings. JFS specialists and volunteers provide a wide range of services—from case management and employment support to citizenship assistance—to help struggling families meet basic needs and move towards self-sufficiency.

### JFS works with immigrants from all over the world, including:

- |                        |             |                |
|------------------------|-------------|----------------|
| Albania                | El Salvador | Pakistan       |
| Argentina              | Ghana       | Peru           |
| Azerbaijan             | Guatemala   | Portugal       |
| Bolivia                | Haiti       | Rep of Congo   |
| Brazil                 | India       | Rep of Moldova |
| British Virgin Islands | Iran        | Russia         |
| Cameroon               | Israel      | Sierra Leone   |
| China                  | Kazakhstan  | Syria          |
| Dominican Rep          | Kyrgyzstan  | Ukraine        |
| Egypt                  | Nigeria     | Venezuela      |

## IT ALL ADDS UP TO:



## IMPACT!

“ My students are hard at work mastering English, thanks to the resources and supplies provided by JFS. ”

—Barbara Gainsboro, Volunteer



## MORE IMPACTS that strengthen families



*Adoption Choices—Parents honoring their diverse children*



*Celebrating Shabbat and enjoying challah during a program for young families in Framingham*

Across the Metrowest and Greater Boston regions, JFS is expanding opportunities for families to make connections, find support and build community.

JFS **Adoption Choices** social workers provide expert, professional services to would-be parents and birth mothers who need help navigating the adoption process.

JFS is a community referral source for LGBTQ individuals and families looking for information and services.

***Jewish Family Service is the first call I make when seeking help for a congregant in need.***

—Rabbi Laurence Bazer,  
Temple Beth Sholom of Framingham



**MORE IMPACTS**  
that strengthen communities



*2nd grade students at The Rashi School learn about JFS's work with immigrants as part of Purim Tamchui*

JFS was honored to be chosen to participate in The Rashi School, *Purim Tamchui* - a three-week long school-wide philanthropy project that engages students in meaningful social justice learning and action and helps them recognize themselves as educated and empathetic young philanthropists.



*Students from The Rashi School made and donated winter hats to the students at Wilson Elementary School*

**“ With a full heart of inspiration, admiration and love, we hope that these funds enable you to bring greater joy, justice, and a love for life and a promise for a happier future for the many children and their families whose lives you profoundly touch every day. ”**

**—Stephanie Rotsky, Social Justice Coordinator at The Rashi School**



# PERFORMANCE MANAGEMENT

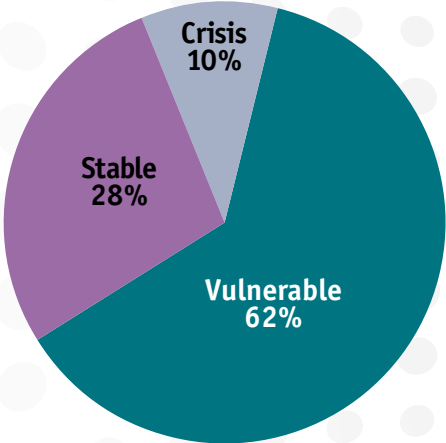
that drives service excellence

We are obligated to our clients and to our donors to invest our resources in programs that have positive impact and accomplish desired results.

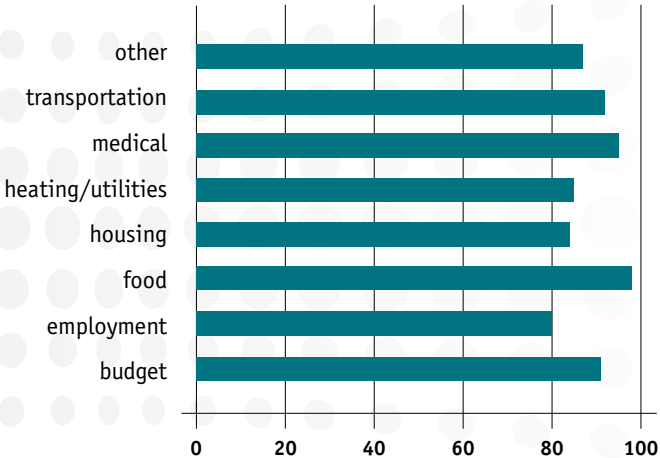
JFS' performance management program involves much more than data collection and measurement. In our performance management process we commit to rigorous self-assessment, to ongoing learning and revision based upon that learning, and to internal and external transparency. It involves all staff—line and leadership, as well as clients and other stakeholders. The overarching goal of JFS' performance management system is service excellence—as defined by program efficacy and efficiency in client goal attainment and satisfaction.

## OUTCOME INFORMED: UNDERSTANDING THE NEEDS OF OUR CLIENTS...

**FY2017 FAN Household Economic Status Upon Admission**



**FY2017 FAN Complete or Partial Goal Attainment**



## ... AND HELPING TO MEET THOSE NEEDS

Using a measurement tool to track the economic status of clients over time, data shows that 45% of **Family Assistance (FAN)** client households demonstrate improvement, moving from crisis towards stability and self-sufficiency.

Original Score	FAN Improvement Score			
	Crisis 4	Vulnerable 3	Stable 2	Self-Sustaining 1
Crisis 4	28%	50%	17%	6%
Vulnerable 3		43%	45%	11%
Stable 2			89%	11%
Self Sustaining 1				100%

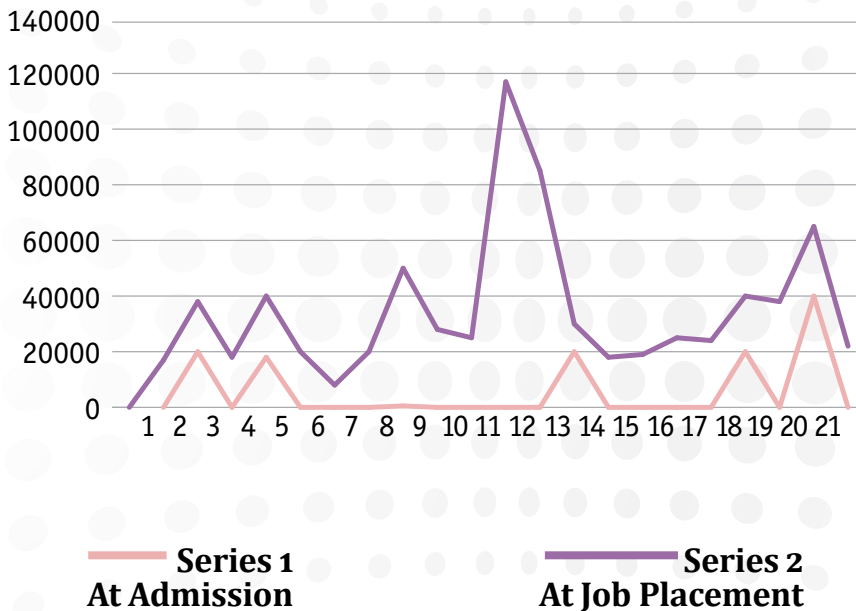


## EFFECTIVE – HIGH RETURN ON INVESTMENT

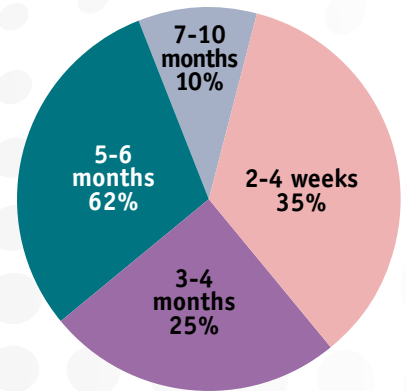
A one-time Tufts Health Foundation investment achieved a 600% annual return. The grant supported a program that significantly improved the lives of minority/immigrant middle aged unemployed/underemployed Metrowest residents by assisting them to find living wage jobs suited to their interests and skill sets, thereby attaining self-sufficiency, eliminating reliance upon public benefits and increasing tax contributions.

Collectively, placed client income increased from \$120,544.00 annually to \$713,338.00 (excluding commissions), a gain of over **\$592,794, annually.**

Client Income Levels



Job Acquisition Time



Helping people in crisis through the **Family Assistance** program and empowering immigrants to succeed are just some of the initiatives featured in this report that move the needle in our community. It is through the critical lens of performance management that JFS assesses programs and dedicates resources, ensuring that funder investments are spent wisely and desired outcomes are achieved.



*Through data collection and continuous outcome analysis, JFS strives to create and maintain responsive, high-quality programs with significant impact on the lives of the individuals, families and communities we serve.*

—Rosemarie Coelho, Director of Performance Management



# VOLUNTEER ENGAGEMENT INITIATIVES

that impact and strengthen our community

Photo: Axie Breen



Staff Natella Dayn and Kayla Hopkins with intern Sophie Cohen as they lead volunteers in assembling backpacks for low-income students



The annual Diane and Chester Black Lecture for Volunteerism and Civic Engagement; Guest Speaker Andy Tarsy reflects on the "The Noble Transformation of the Volunteer"

JFS is harnessing the power of over **560 volunteers** to make a significant impact in our community. Across **15 programs**, volunteers have donated over **7,000 hours** addressing the needs of clients, including guiding immigrants through the citizenship process, resettling refugee parents and children, providing backpacks with school supplies to underprivileged students, collecting clothes for low-income families, escorting frail older adults to medical appointments and building relationships to reduce social isolation.

**Thank you to our many volunteers for partnering with JFS to stand up for those left behind!**

- |                       |                      |                        |
|-----------------------|----------------------|------------------------|
| Suzette Abbott        | Safaa Atoui-Ghozayel | Kara Bettigole         |
| Daniel Abend          | Amy Averback         | Claudine Bing          |
| Jill Abend            | Ian Averback         | Donald Bloch           |
| Michelle Abou-Raad    | Alan Avery-Peck      | Ellen Bloch            |
| Elaine Abrams         | Elyssa Back          | Jill Bloom             |
| Myra Ackerman         | Laurence Bailen      | Amy Bolotin            |
| Lauren Adams          | Susan Balogh         | Judy Bolton-Fasman     |
| Margery Adams         | Judy Banker          | Stacy Book             |
| Jane Akiba            | Elizabeth Banks      | Stephen Bookbinder     |
| Jon Albin             | Kathryn Barbosa      | John Bookston          |
| Helen Alcalá          | Latifa Bassou        | Susan Brady            |
| Nick Alexander        | Ivy Bauer            | Rosita Brailovsky-Fine |
| Yazan Aljarrah        | Deb Becker           | Jamie Brass            |
| Maria Julia Almeida   | Noreen Begley        | Axie Breen             |
| Muataz AlMufti        | Sali Ben Sulaiman    | Kenneth Brown          |
| Percy Andreazi        | Sibel Benmayor       | Eva Bruklich           |
| Jonathan Andujar-Levy | Roberta Bergstein    | Sheila Buckley         |
| Denise Annuciata      | Barbara Berke        | Catherine Bueker       |
| Amy Ansell            | Jamie Berkson        | Rhea Bufferd           |
| Anne Archibald        | Carol Berlin         | David Bunis            |
| David Arond           | Elsie Bernaiche      | Tracie Burns           |
| Aiswarya Arul         | Barbara Berns        | Randi Butcher          |
| Naim Assil            | Jessica Berns        | Alan Byer              |
| Leanid Astrakou       | Karin Beth           | Michele Byrnes         |



## VOLUNTEERS continued

Doris Cachecho  
 Riad Cachecho  
 Michelle Carbonneau  
 David Carr  
 Karina Carr  
 Emily Carroll  
 Livingston Carroll  
 Matthew Cayo  
 Izzy Cevallos  
 Sylvia Cevallos  
 Jana Chalak  
 James Chansky  
 Marsha Chasen  
 Carl Citron  
 Helaine Cohen  
 Karen Cohen  
 Ronna Cohen  
 Rosalyn Cohen  
 Ryan Corbett  
 Molly Covarrubias  
 Abigail Cox  
 John Cox  
 Kate Crawford  
 Rachel Cronson  
 Sophia Cue  
 Andrea Cunningham  
 Mona Dabbon  
 Ann Daitch  
 Jackie Dana  
 Lisa Danetz  
 Dave Danning  
 Esther Dansinger  
 Remi Dansinger  
 Joao DaSilva  
 Jonathan Davis  
 Margot Davis  
 Helaine Deneberg  
 Tripti Deodhar  
 Cherish Deoliveira  
 Blanche Dietz  
 Victor Dietz  
 Noel Dion  
 Nancy Dlott  
 Jayne Dorfman  
 Susan Driscoll  
 Anavi Eagar  
 Cheryl Ebenstein  
 Susan Edgman-Levitan  
 Amira Elamri  
 Stephanie Elkind  
 Jiah Elliotte  
 Mahmoud EL-Rifai  
 Stephanie Erber  
 Rossenthal Fajardo  
 Roberta Falke  
 Bathoola Fathima  
 Margaret Fearey  
 Joel Feinberg  
 Marilyn Feinberg  
 Eleanor Feldman  
 Joseph Fellows  
 Zachary Felson  
 Tayler Ferguson  
 Adienex Fernandez

Deborah Filler  
 Benjamin Fink  
 Lindsay Fisch  
 Rebecca Fishbein  
 Jessica Flagg  
 Carolyn Flammey  
 Amy Fleming  
 Patience Fon  
 Elizabeth Ford  
 Gary Forman  
 Sarah Foss  
 Gloria Fox  
 Janet Fox  
 Roberta Fox  
 Rosalie Fox  
 Emma Freedlander  
 Gustav Freedman  
 Stuart Freedman  
 Erica Freishtat  
 Bonnie Friedman  
 Barbara Gaffin  
 Barbara Gainsboro  
 Robert Gant II  
 Robert Garber  
 Diane Gardener  
 Michael Gardener  
 Ute Geigenmuller-Gnirke  
 Jackie Gelb  
 Nancy Gerber  
 Mohamed Ghanem  
 Phyllis Giller  
 Bonnie Gilman  
 Laura Gilman  
 Michael Gilman  
 Benjamin Ginsburg  
 Glen Glater  
 Peter Glick  
 Paula Glickman  
 Nina Godles  
 Doreen Goldberg  
 Jeffrey Goldberg  
 Marilyn Goldberg  
 Shoshanna Goldberg  
 Richard Golder  
 Shirley Golder  
 Priscilla Golding  
 Theo Goldman  
 Jen Goldsmith  
 Amanda Gollaher  
 Marcella Gomes  
 Bambi Good  
 Carolyn Goodwin  
 Jennifer Gordon  
 Joan Gordon  
 Naomi Gordon  
 Jacob Gorlovsky-Schepp  
 Debbie Gotbetter  
 Aaron Green  
 Sylvia Green  
 Rachel Greenberg  
 David Greenfield  
 Jennifer Grella  
 Nancy Grossman  
 Bridgette Grothman

Elin Grunwald  
 Jared Hagans  
 Jack Hall  
 Jacqueline Hallo  
 Michael Halprin  
 Amale Harb  
 Layla Hariry  
 Linda Hasenfus  
 Virginia Hatch  
 Martha Hausman  
 Abby Hechtman  
 Charles Foss  
 Ruth Hertzman-Miller  
 Sandra Hewitt  
 Charlie Hitch  
 Emily Hoadley  
 Michelle Hoffman  
 Charles Homer  
 Horizon Technology  
 Nancy Horwitz  
 Rafat Houranieh  
 Tony Houranieh  
 Marianne Hughes  
 Theo Hummel  
 Sophie Hunter  
 Safura Hussain  
 Lina Hussein  
 Tracey Hyams  
 Qais Iqbal  
 Nicholas Ironside  
 Dave Jack  
 Oliver Jaffe  
 Rebekah Jaffe  
 Khalid Jaleel  
 Jane Joiner  
 Miram Jost  
 Stephanie Juma  
 Eva Kahan  
 Rona Kahn  
 Cathryn Kaner  
 Gertrude Kaplan  
 Gerry Kaplow  
 Al Karimi  
 Sherri Kassier  
 Robert Katz  
 Milly Katzman  
 Max Kaufman  
 Phyllis Kaufman  
 Waseem Kawaf  
 Laurie Kay  
 Richard Kazis  
 Sophie Kazis  
 Karen Keely  
 Valerie Kennan  
 Jack Kerrigan  
 Max Kerrigan  
 Amna Khan  
 Hajra Khan  
 Rubina Khan  
 Rumana Khan  
 Zubair Khan  
 Dahlia Khankan  
 Sarah Kianovsky  
 Ruth Klepper  
 Jodie Kliman

Annie Kline  
 Lizzy Knyazhitsky  
 Adi Kokorowski  
 David Kokorowski  
 Eytan Kokorowski  
 Helen Kolsky  
 Henry Kominik  
 Jessica Kondrat  
 Leila Koplan  
 Lia Kornmehl  
 Shelley Kotlikoff  
 Nancy Kramer  
 Joyce Krasner  
 Stephen Kraus  
 Beckett Kravetz  
 Eva Kravetz  
 Ryan Kravitz  
 Susan Krinsky  
 Josie Kuchta  
 Miriam Kutcher  
 Zachary Laidlaw  
 Marci Landis  
 David Landman  
 Mary Beth Landrum  
 Andy Langowitz  
 Ayla Lari  
 Jessica Lasser  
 Paula Lavidor  
 Rozalia Lavitman  
 Grace Lebleu  
 Christine Lee  
 Deidra Lemus  
 Martha Lerman  
 Laura Lerner  
 Andrea Lesser-Gonzalez  
 Julius Levin  
 Peri Levin  
 Susan Levin  
 Anna Levine

Leslie Levine  
 Theresa Levinson  
 Linda Levitt  
 Alice Levy  
 Theresa Levy  
 Jenna Lifshatz  
 Laura Lilly  
 Janet Lipkin  
 Brooke Lipsitt  
 Paul Lipsitt  
 Judith Locke  
 Sam Loewenstein  
 Christopher Lugo  
 Esther Lyon  
 Andrea Macdonald  
 Eileen MacQueen  
 Ery Magasanik  
 Laura Magasanik  
 Gabi Marcus  
 Melanie Marcus  
 Karen Margolis  
 Lauren Marks  
 Elaine Marmer  
 Joshua Martin  
 Amy Mayer  
 John McArthur  
 Alison McGandy  
 Sarah McIntosh  
 Mindee Meltzer  
 Gentry Menzel  
 David Merfeld  
 Robert Merrill  
 Carol Mersky  
 Chana Meyer  
 Michel Meyers  
 Amy Michaels  
 Susan Michaels  
 Sonia Michelson  
 Zachary Milbauer



*Volunteers stocking the food pantry*





*Keri Ann Crandall, Heather Flugrad, Kara Florian, Kayla Hopkins with Gabi Marcus and Adinex Fernandez as they receive the Youth Leadership Award, sponsored by Ellen Bloch*

- Diana Wainrib
- Rhoads Wald
- Yi Ting Wang
- Gretchen Warland
- Wichita Watriboonruang
- Jen Weber
- Deborah Weinhaus
- Aviva Weinstein
- Lisa Weinstock
- Noah Weinstock
- Karen Weintraub
- Maiya Werba
- Barbara Wetzstein
- Gabriel Wexler
- Elizabeth Wheeler
- Barry Wieder
- Bethany Williams
- Lydia Wilson
- Joel Winett
- Jill Winitzer
- Roberta Winitzer
- Jacob Winn
- Jennifer Wise
- Jennifer Wishnie
- Andrew Witty
- Sandra Wixted
- Abby Wolf
- Julie Wolf
- Sheila Wolfson
- William Wolfson
- Rachel Wolf-Wagner
- Lisa Wollman Kliman
- Giang Wyner
- Yiru Xie
- Debra Yampolsky
- Amy Zack
- Zeina Zayour
- Anna Zeren
- Ari Zeren
- Sophia Zhu
- Abigail Zimman
- Rose Zoltek-Jick
- Boris Zverev
- Amy Zwanziger
- Daniel Zwelling
- Marjorie Zwicker

- Michael Miller
- Rachel Miller
- Ruth Miller
- Tina Miller
- Meredith Mills
- Nikki Minsky
- Sarah Minsky
- Seth Mnookin
- Monica Moawde
- Jayne Moffi
- Benjamin Morel
- Ricki Morell
- Isaac Morris
- Jaden Morris
- Peggy Ann Morrison
- Andrew Morse
- Debbie Moss
- Nawar Muhsin
- Lina Musayev
- Mary Tatra Musheshe
- Bruce Nable
- Anne Nakhla
- Rana Nashi
- Dorene Nemeth
- Lauren Nemeth
- Dana Neshe
- Harriet Nirenstein
- Kenneth Nirenstein
- Matt Noah
- Melissa Noah
- Lois Novotny
- Marcelline Obodou
- Kelly O'Brien
- Aemilia Ohop
- Barbara Okun
- Kanae Ono
- OnProcess Technology, Inc.
- Jenna Orlinsky
- Elizabeth Pal
- Rose Pappenheimer
- Paul Paternoster
- Milena Pavlovskaya
- Phyllis Pawa
- Gary Pforzheimer
- Mary Pforzheimer
- Emily Pierce

- Ilene Pincus
- Terri Podorefsky
- Lara Pollack
- Marion Pollock
- Nathan Proctor
- Talia Puterman
- Tyler Quade
- Sohail Quadir
- Joan Rachlin
- Heather Rafey
- Marina Rakhkin
- Noel Raphael
- Firkins Reed
- Cathy Regensburger
- Andrea Richman
- Liz Riedford
- Barbara Robinson
- Rachel Rock-Levy
- Susan Rodgin
- Bonnie Rosenberg
- Marcia Rosenberg
- Raquel Rosenbloom
- Paul Rosenzweig
- Louis Rossi
- Bonnie Rotenberg
- Ellen Rovner
- Cindy Rowe
- Ivy Rubeck
- Anne Rubenstein
- Anna Rubin
- Irene Rubin
- Jesus Ruelas
- Michele Russell-Einhorn
- Susan Sabin
- Marcie Sacks
- Sylvie Sacks
- Linda Sakin
- Louis Sakin
- Betty Saltzman
- Gabriella Salvatore Strecker
- Spring Salvin
- Bridget Samburg
- Jackie Sand
- Barbara Sands
- Elizabeth Santandreu
- Eva Sartori

- Michael Sawyer
- Anlee Schaye
- Robert Schaye
- Ruth Schechter
- Lynn Scheller
- Robin Schreier
- Pamela Sebor-Cable
- Rachel Seliber
- Suzanne Selig
- Mitchell Shames
- Alane Shanks
- Cliff Sharin
- Noa Shatz-Cauley
- June Shea
- Jack Shear
- Ellen Sherman
- Zoe Shiovitz
- Howard Sholkin
- Sheila Shulman
- Sue Sidel
- Phelicha Silva
- Carol Silver
- Ellen Silver
- Ira Silver
- Zoe Silver
- David Silverman
- Lindsay Silverman
- Gail-Ann Simon
- Eileen Simons
- Peter Smith
- Rosalie Smolinsky
- Jordan Smoller
- Mary Therese Snyder
- Cynthia Soares
- Elizabeth Sobol
- Jared Sokoloff
- Joshua Sommers
- Jacob Sparks
- Elizabeth Spayne
- Benjamin Speicher
- Isaac Speicher
- Paula Spies
- Judy Spivak
- Jami Stein
- Ellen Steinberg
- Brenda Stephens

- Mason Stern
- Oliver Stern
- Mel Stoler
- Ellen Suvalle
- Mary Jane Suzman
- Suzanne Szwarczewicz
- Majedah Taliep
- Alex Tam
- Lucy Tannen
- Andrew Tarsy
- Charlotte Temple
- Temple Emanuel Office Staff
- Shelly Tenenbaum
- Alan Teperow
- Larry Tobin
- Laura Towvim
- Yoni Tsapira
- Joanne Tuck
- David Turetsky
- Megan Vaillancourt
- Lorrany Vaz
- Karen Victor
- Claudia Vise
- Jeniffer Vivar Wong
- Raizi Vogel
- Dylan Volman
- Ana Volpi



*Volunteers and students become fast friends at Wilson Elementary School*





# SEIZE THE DREAM

JFS proudly honors Michelle Paster and Josef Blumenfeld, and Artemis Joukowsky, III, extraordinary community partners whose powerful efforts are impacting the lives of children and families throughout Metrowest, Greater Boston and communities around the world.



Michelle Paster and Josef Blumenfeld



Jayne Lampert with Artemis Joukowsky, III

*“JFS of Metrowest is close to my heart. This is my local community, and the work they are doing comes at a critical time.”*  
 —Artemis Joukowsky, III

*The true heroes are the JFS staff and leadership, and all those that stand up for those left behind.*  
 —Michelle Paster and Josef Blumenfeld

### IT ALL ADDS UP TO:



# IMPACT!

### SPECIAL FRIENDS HOST COMMITTEE

- Jodi and Jim Blankstein
- Rabbi Herman Blumberg
- Shoshana and Yael Blumenfeld
- Kathy and Scott Cohen
- Lesley Orlinsky
- Pat and Jim Poitras

- Dena and Michael Rashes
- Ian Rubin
- Judith Sydney and Aviva Sapers
- Andy Tarsy
- Karen Tichnor
- Neil and Lisa Wallack

### SPECIAL THANKS TO...

- Chart Productions, Jordan Rich
- David Fox Photography
- DOWSHU
- Kronos
- Peterson Party Center
- SER Exposition
- Thelma World Productions

### FOOD PROVIDED COURTESY OF...

- |   |  |
|---|--|
| 110 Grill Wayland                             | Franklin Caterers                              |
| Cakes by J and J                              | Heritage at Framingham                         |
| Casa Vallarta                                 | JCHE- Shillman House                           |
| Creative Entertaining/Catering by Roche Bros. | Larry Levine’s Kosher Market/Catering by Tevya |
| Foodie Café                                   | Legal Sea Foods                                |

- Margery Gussak Catering
- The Melting Pot
- The Sleepy Baker
- Uno Pizzeria and Grill
- Yummy Mummy Brownies
- Zaftigs Delicatessen

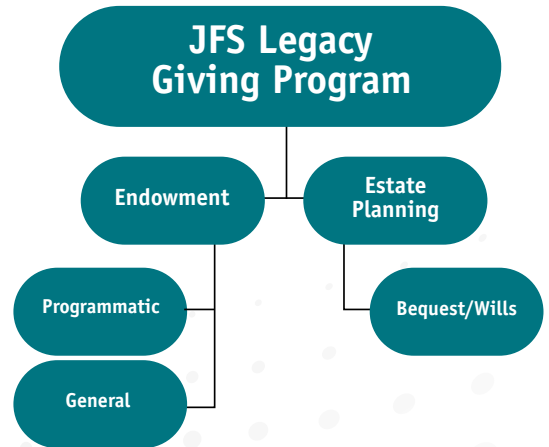


## LEGACY GIFTS

ensure JFS' impact in the community for future generations

As we look forward, legacy giving will play a significant role in assuring that we can maintain the level of services needed to positively impact our Metrowest community. With a gift to the JFS/ Metrowest Endowment Fund, you can create a legacy of enduring benefit to those who will come after you by ensuring that JFS will have the funds to:

- Meet future needs
- Maintain consistent program funding
- Expand financial resources
- Respond in the event of an emergency



### Priority Program Areas for Endowment Funding

Civic Engagement, Community Service and Leadership

Education, Mentoring for Low-Income Children and Families

Hunger, Basic Needs, Family Assistance and Employment

Healthy Aging in the Community for Frail, Vulnerable Elders, Support for Family Caregivers

“Your concerns and priorities have helped shape JFS today. Your legacy gift will help shape tomorrow.”

### We are deeply grateful to the following supporters who have made generous commitments to ensure JFS' future:

Judith and Alan Bernstein

Diane and Chester Black

The Boston Foundation—  
Martin Fund, A.D. Chandler III

Susan Copeland

Fran and David (z"l) Elovitz

Saul Kurlat Trust

Max Michelson (z"l)

Shirley Poplin

Marcia and Paul Rosenberg

Rachel and Mark Seliber

To ensure that the values and concerns that have inspired your involvement in JFS will endure for generations to come, please consider creating a named fund, establishing an endowment, and/or including JFS in your estate planning.

Together, we can maintain the agency's promise to the community to stand up for those left behind.



## DONORS & CONTRIBUTORS



Marc Jacobs, Max Michelson (z"l) and Barry Shrage

### \$500,000+

Combined Jewish Philanthropies  
(includes core capacity and all programmatic grants)

### \$50,000-199,999

Susan Copeland  
Herb and Maxine Jacobs Foundation  
Amalie M. Kass  
James W. and Patricia T. Poitras Fund,  
Foundation for MetroWest  
Edward and Barbara Shapiro  
Temple Beth Elohim\*  
Tufts Health Plan Foundation

### \$25,000-49,999

Aron and Susan Ain  
Robert and Cari Band  
Edward and Peggy Barry  
The Boston Foundation  
Commonwealth Creative Associates,  
Robert Fields  
Cummings Foundation  
First Parish in Lincoln\*  
Rita J. and Stanley H. Kaplan Family  
Foundation, Inc.  
Temple Israel of Boston\*

### \$15,000-24,999

American Jewish Committee  
Joan H. Brack Charitable Foundation  
Harvey and Marsha Chasen  
Paul English  
David and Tracey Frankel  
Sanofi Genzyme Corporation  
Edward and Barbara Scolnick  
Temple Shalom of Newton\*  
Temple Sinai Brookline\*  
TripAdvisor Charitable Foundation  
United Airlines

### \$5,000-14,999

Mark and Carolyn Ain  
Anchor Line Partners  
Chester and Diane Black  
Bob's Discount Furniture Charitable  
Foundation  
Allan and Rebecca Chasen  
Scott and Ronna Cohen  
Congregation Beth El of Sudbury\*  
Digital Federal Credit Union for Kids  
Eastern Bank Charitable Foundation  
Eos Foundation  
Steven and Renée Finn  
Foundation for MetroWest  
Jay and Barbara Gainsboro

### Linda Glenn

Gray, Gray & Gray, LLP  
Lawrence and Beth Greenberg  
The Joukowsky Family Foundation  
Brad and Allison Kates  
Louis and Rosanne Kates  
David Klein and Robin Wolk  
Jeffrey Kraines and Linda Kaplan  
Richard and Clare Lesser  
Ezra Levine and Gretchen Warland  
MetroWest Health Foundation  
David and Gail Milowe  
Ellis and Barbara Morris  
MutualOne Charitable Foundation  
Charles and Jessica Myers  
RBC Wealth Management and RBC  
Foundation-USA  
Arnold and Linda Roth  
Abraham Shapiro Charity Fund  
Jill Smith and Randy Ross  
Michael and Arlene Sobol  
Sherman Starr  
The Sudbury Foundation  
Michael and Karen Tichnor  
Josef and Dana Volman  
Jed and Ilana Weiss  
Sidney and Deanna Wolk  
Y & R Charitable Trust, Lisa Y. Rourke

### \$1,000-4,999

Jean and Rania Abouhamad  
American Arabic Benevolent  
Association\*  
Apps Associates  
At Your Service Homecare  
Elias and Laurde Audy  
Jamie and Thea Bader  
Christina Bai  
Philip Berk  
Robin Berman  
Alan and Judy Bernstein  
Donald and Ellen Bloch  
Bokhary and Sons, Inc.  
The Boston Foundation-Martin Fund,  
A.D. Chandler III  
The Brack Family Fund, Foundation for  
MetroWest  
Ken and Jodi Bring  
Riad and Doris Cachecho  
J.Calnan & Associates  
F. Javier Cevallos and Joséé  
Vachon-Cevallos  
Larry and Rachel Chafetz  
Conrad and Lisa Chanzit  
Carl and Carol Chudnofsky  
Brian and Alison Clew  
Daniel Cohen

\* This institution raised money from their membership to support the JFS Syrian Refugee Humanitarian Project.



## DONORS & CONTRIBUTORS continued



*Board Member Javier Cevallos and his wife Josée*

Kathy and Scott Cohen	Peter and Kerstin Glick
Marie Cohen	Richard and Laurie Gliklich
Stuart Cohen	Bob and Susan Glovsky
Community Transportation Association of America	Joseph and Lynne Goodman
Congregation Or Atid*	James Gordon
Woolsey and Beatrice Conover	Sally Gottesman
Lino and Kathryn Covarrubias	Steven Grinspoon and Winnie Sandler
Christina Crowe	Tammy Harris
Cushman & Wakefield, John Boyle	Harvard University
Dana Hall School Students*	Henderson Foundation
Jeremy and Sherrie Delinsky	Richard and Gabrielle Henken
Peter and Hinda Drotch	John and Amy Herrera
Frances Elovitz	HUB International New England, Charles Brophy
Environments at Work	IBM Employee Services Center
Richard Feldman	Impact Framingham
Daniel and Dana Finn	Edward and Betsy Jacobs
David and Lauren Fishman	Marc and Joanne Jacobs
Kenneth Fishman and Lisa Wendell	Andrew and Cindy Janower
Guy and Pamela Forman	Jeff and Cantor Marcie Jonas, Selma Liebnick
Melvin and Beatrice Fraiman	Artemis Joukowsky
Ari Freisinger and Elizabeth Mishkin	Jack and Audrey Kadis
Joseph L. & Ray L. Freund Foundation	Jack and Ellen Kay
Alan Geller	

Kids Clothes Club	Jeffrey and Heather Swartz
Mitchell and Ann Kramer	TJX Foundation
Kronos	United Way of Massachusetts Bay and Merrimack Valley
Barrie Landry	Luis Vidal and Jennifer Slifka
Lebanese Syrian Ladies Aid Society*	Neil and Lisa Wallack
Joel Lehrer and Robyn Parets	Wellesley Village Church*
Boston Breast Diagnostic Center	Sonya and Sean Wilder
Levine Chapel, Inc.	Adam and Michelle Wilen
Dennis and Cindy Lombardo	Louise Wolfe
William and Cynthia Marcus	Paul and Judith Zaff
John McArthur and Reva Tankle	Arnold and Brenda Zaltas
Harry and Deborah Merkin	
MetroWest Medical Center	.....
Barry and Karen Miller	<b>\$250-999</b>
Emily and Steven Moskowitz	501Partners, LLC
Joel Moskowitz and Janet Buchwald	Peter and Jill Abend
Majed Mouded	Jeff Alexander and Jocelyn Bailin
Packard Design	Robert Allen and Shirley Hui
Joseph and Elaine Paster	Neil Aresty and Estie Rappaport
Richard and Ann Pozen	David and Jessica Aronoff
The Press Family Foundation	Wallace and Lois Arthur
Richard and Judi Raphael	Chad and Nicole Asarch
Sari Anne Rapkin	Jodi Asarch
Michael and Dena Rashes	Ghassan and Alissar Audi
The Rashi School Purim Tamchui Project	Alan and Lisa Avery-Peck
Alan and Cathy Regensburger	John and Patricia Ayoub
Paul and Marcia Rosenberg	Donald and Karen Bachman
Neil and Tracy Ross	Stuart and Lee Bauer
Janet Sanders	David and Nancy Bayer
Jonathan and Faryl Sandler	Bearak Reports, Inc.
Lester and Caren Schindel	Lee Ann Beavers
Andrew and Barbara Schultz	The Benevity Community Impact Fund
John and Rhoda Schwarz	Rosalind and Walter Bernheimer
Douglas and Andi Shaw	Neil and Sandie Bernstein
Shirat Hayam of North Shore*	Stephen and Judith Bernstein
Cynthia Shulman	Joshua Biber
Arnold and Polly Slavet	Ronald and Daniele Bick
Robert and Myra Snyder	Darren and Michelle Black
Alan and Susan Solomont	Jim and Jodi Blankstein
St. Mary's Credit Union	Andrew and Marci Bloch
St. Peter's Episcopal Church*	Adam Blumer and Sarah Guernsey
	Daniel and Jill Bradford

\* This institution raised money from their membership to support the JFS Syrian Refugee Humanitarian Project.



## DONORS & CONTRIBUTORS continued

Brezniak-Rodman Funeral Directors,  
Inc.  
Brookline Rotary Club  
Robert and Rosalind Brown  
Susan Burns-Tisdale  
Jeffrey Bussgang  
Carlyle House  
Kirk Carter  
Dennis Ceru and Roxanne Lyman  
Rosalyn Cohen  
Concord Park Senior Living  
Congregation Beth Sholom\*  
Chase Crossno  
D.S. Yarckin Electric, Inc.  
Leandro Dacosta  
Shadi Daher and Milagros Serrano  
David Dimenstein  
Carolyn Dykema  
EPAM Systems, Inc.  
Robert Evans  
Roberta Falke and Andrew Levey  
Gerald and Marsha Farnelant  
Steven and Deborah Feldman  
Jonathan Field  
Lindsey Fieldman  
First Congregational Church\*  
Bob and Roberta Fitzpatrick  
Harvey and Marcia Fleishman  
Howard and Lauren Flitt  
Emma Flowers  
Kevin and Paula Foley  
David Josef and Danny Forrester  
Franny's Landscape  
Arthur and Beverly Freedman  
Ethan and Erica Freishtat  
Harvey and Brenda Freishtat  
Gann Academy  
Diane and Michael Gardener  
Paul and Li Gass  
Fred and Anita Gelfand  
Fares Gennaoui  
James and Erin Geshwiler



*Board Member Allison Kates and her husband Brad with Board Member Dan Finn and his wife Dana*

Penny Glassman  
Patricia Glazer  
Mark Globerson and Esther Heimberg  
Harriet and Marshall Goldin  
David and Sharon Goldstein  
Ronald and Mary Golub  
Robert and Martha Gordon  
Mike and Gail Gregory  
Wolf and Berna Haberman  
Christina Harms  
Hebrew SeniorLife  
Ruth Hertz  
Joshua Herzig-Marx  
Judy Herzig-Marx  
Thomas and Nancy High  
Peter and Joan Hoffman  
Antoun Houranieh  
Tracey Hyams  
Ronald and Linda Isaacson  
David and Janis Joel  
Wesley and Phillis Johnson  
Nathan and Sally Kaitz  
Kaplansky Insurance  
Kimberly Kargman  
Charles and Sharon Karp  
Laurie Kay  
SueEllen Keenan

Irving and Mindy Kempner  
Kat Kennedy  
Kfoury Keefe Funeral Home  
Lisa and Stuart Kliman  
Kistler & Knapp Builders  
Steven and Linda Koretz  
David and Carol Krentzman  
David and Mandi Kunen  
Mary Lahaj  
Ibrahim and Houda Lakkis  
Marc and Jayne Lampert  
Candace Lau-Hansen  
Emily and Brett Lesperance  
Brian and Wendy Levey  
Michelle Lougee  
LR Construction, Louis Laskey

Ery and Laura Magasanik  
Richard and Candace Mandel  
Marc and Laura Mann  
Karim and Helene Mansour  
Max Michelson (z"l)  
Middlesex Savings Bank  
Dorian Mintzer  
Roberta Molliver  
Vincent and Sharon Mollomo  
Jack Morgan  
Needham Heights Automotive Service  
Seta Nersessian and Gregory  
Jundanian  
New England Seal Coating  
Next Generation Communications, LLC  
Michael and Beth Null



*Staff Marissa Zwelling with Supporter Ellis Morris*

\* This institution raised money from their membership to support the JFS Syrian Refugee Humanitarian Project.



## DONORS & CONTRIBUTORS continued



*Board Member Robert Fields, COO Lino Covarrubias and Former Board President Louis Kates*

Victor Nussbaum and Karen Margolis	Aviva Sapers and Judith Sydney
Elaine Ober and Peter Skagestad	Rabbi Rachel Saphire
Grace O'Donnell	Michael and Barbara Sawyer
Ophthalmic Consultants of Boston	Gary and Caryl Shaw
Samuel and Alyne Oppenheim	Sheraton Framingham Hotel
Orchard Hill at Sudbury	Ira and Linda Shoolman
Jeff and Lesley Orlinsky	Harold Shorey and Evie Kintzer Shorey
Michael Oshins	Janet Silver
Marshall and Elaine Paisner	Alan and Leslie Singer
Paul Flaherty Plumbing & Heating Co., Inc.	Gilda Slifka
Robert and Terri Podorefsky	Gail Smith
Amada Senior Care	Rosanne Solomon
Lucia Press	Stephen and Trudy Sonis
Marty and Debbie Quitt	Jill Stansky
Stuart and Judy Rhein	Justin and Tammy Steinman
Ruth Rich	Philip and Rachel Strauss
Judy Riegelhaupt	Andrea Syatt
Steven Robbins and Dana Hayes	Temple Beth Am*
Michael Rocha	Herb and Suzy Tobin
Burton and Gloria Rose	Larry and Jesse Tobin
Arthur Rosen	Joshua and Connolly Tolkoff
Larry and Sharman Rosen	Tosti's Service Station, Inc.
Bruce and Carol Rosenfelt	Total Services Corporation
Michael and Kerrie Rothschild	Tripadvisor Gift Matching Program
Nadia Roumani	Andrew Troop and Andrea Sussman
Ian and Maggie Rubin	Harold and Millie Tubman
Merek Rubin	United Way of Tri-County
Michele Russell-Einhorn	Wendy Waldman
Safety Insurance Company	Norman and Sheila Weinstock
Charles Sandmel and Barbara Simonetti	Renee West
	Whitney Place at Natick
	Wilson, Marino & Bonnevie, P.C.

\* This institution raised money from their membership to support the JFS Syrian Refugee Humanitarian Project.

Joel and Ruth Winett  
 Mark and Nancy Winiker  
 Bill and Sheila Wolfson  
 Howard and Candice Wolk  
 Howard and Nancy Wolk  
 David and Malka Young  
 David Zaltas  
 Daniel and Marissa Zwelling

### \$100-249

Nora Abrahamer  
 Mark and Deborah Abrahams  
 Martin and Rachel Abramson  
 Libby Adler  
 Merrill Adler  
 James Alderman and Janette Cavallo  
 Anne Aldrich  
 Stuart and Laurie Alford  
 Steven and Krista Alperin  
 Rabbi Tom Alpert and Eileen Hagerty  
 Julia Altholz  
 Brenda Altschul  
 Brooks and Mariela Ames  
 Marlene Aron  
 Lyudmila, Sonya, Ester, Simon and Lev Averbukh  
 Linda Ayoub  
 Irma Bader  
 Valerie Ball  
 Hannah Bargad  
 Paula Barta  
 Jacob and Julie Barth  
 Joseph and Laura Bedard  
 Mark Bell  
 Stanislav and Irina Berdichevsky  
 Craig and Staci Berkson  
 Martin Bielawski  
 Jill Bloom  
 Norman and Ronda Bloomstein  
 Laura Blumberg  
 Rabbi Herman and Paula Blumberg  
 Josef Blumenfeld and Michelle Paster

Alex and Stephanie Borns-Weil  
 Susan Borzelleca  
 Ralph and Mary Louise Bozza  
 Brainshark, Inc.  
 Sue Brelus  
 Irwin Brendler  
 Ellen Bruce and Richard Segan  
 Betty Brudnick  
 Donna and William Carleton  
 Gerda Chalfin  
 Kenneth and Cheryl Chernack  
 John and Susan Clayman  
 Alan and Linda Cohen  
 David Cohen and Rhonda Magier-Cohen  
 Judith Cohen  
 Benjamin and Jacqueline Cohn  
 Milton and Barbara Coleman  
 Bruce and Roslyn Comenitz  
 Alyssa and Robert Connor  
 Catherine Connor  
 Howard and Lois Cooper  
 Amanda and David Coughlin  
 Michelle and Luiz Da Costa  
 Joe and Katherine Daisley  
 Susan Darien  
 William Davenport  
 Kirk and Laurie Davis  
 David and Carole Decter  
 Stephen and Linda Desatnick  
 Susan Detz  
 Joan and John Donovan  
 Lana and Brian Dugdale  
 Kristin and Kevin Dunbar  
 Leda Eizenberg



*Board Member Ezra Levine*



## DONORS & CONTRIBUTORS continued



*Board Member Robin Welch and his wife Karen, Renée and Steven Finn, and Elaine and Burton Marmer*

David and Toby Ellis

Robert Engel

Armand and Carol Ann Epstein

Steven and Andrea Fein

Joni and Reid Fishman

Fitts Insurance

Danielle Fox

Audrey and John Frank

Gustav Freedman and Jacquelyn Sand

Joel and Betty Freedman

Jenessa Freid

Jacob Friedman

Michael and Deena Friedman

Michael and Rebecca Friedman

Donald and Nancy Fried-Tanzer

Shannon Garber

Steven and Phyllis Garr

Katherine Garrahan

Risa Gewurz

Michael and Laura Gilman

Seth Gitell

Allen Goldberg

Sanford Goldfless

Alan and Linda Goldstein

Sanford and Lorraine Gottlib

Brian and Rachel Greenberg

Danna Greenberg

Lester and Evelyn Grinspoon

Peter Gross

Shirley Grossman

Stephen Gunzburger

Michael Hagopian

Michel Hajjar and Albertina  
Cerveira-Hajjar

Kathleen and Maurice Hall

Andrea Halper

Earle and Carol Halsband

Marcia Hanfling

Susan Harr

Mary and Paul Harris

Russell and Marilyn Harter

Emile and Lina Heraiki

Martin and Ellen Herbordt

Lois Herman

Michael Herzberg and Ellen Frank

Annette and Paul Hodess

Carl and Paula Hoffman

Farhat and Khatoum Homsy

Janat Horn

Nabil Hourani and Amal

Maalouf-Hourani

Richard Jacobsohn

Deborah and Paul Jacobson

Jewish Workshop for Education  
& Culture

Andrea and David Joseph

Robert and Susan Joseph

Fred and Greta Kahn

Rachel Kalikow

Joel and Jane Kamer

Arnold and Bernice Kaplan

Lauren Kaplan and Russell Green

Leslie and Alan Kaplan

Neal and Susan Karelitz

Burton and Renee Karlin

Brian and Marca Katz

David and Mildred Katzman

Neil and Phyllis Kaufman

Katherine and John Kaufmann

Keane Fire & Safety Equipment

Company, Inc.

Karen Keely

Herbert and Sally Kepnes

Michael and Maureen Kerstein

Nathaniel Kingsbury and Le Li

Kathy and George Kinzfohl

Danielle Klainberg

Frederick and Sherrill Kobrick

Neil Kominsky and Deborah Frank

Ruth Lander

Mark and Joan Lappin

Rob Leikind and Ellen Jawitz

Bill and Martha Lerman

Martin Levin

Michael Levin

David Levinson and Dawn Johnsey

Levinson

Stephen and Janet Lipkin

Eliot and Amy Lurier

Joseph Machera

Michael and Nancy Marks

Eric and Janice Masi

Peter and Jill Matusow

Thomas and Margaret McDonagh

Geraldine McEachern

Charles McKeating

Samir Melki

James Metz

Joseph Meyers and Estelle Burg

David Michael and Monica

Weiss Michael



*Board Member Josef Volman  
and his wife Dana*

Suzanne and Stephen Mikesell

Joan and Harvey Milowe

Ali Mir

Ilan Mizrahi and Deborah Glass

Seth and Sara Mnookin

Charlie and Helaine Morrill

Neil Motenko

Robert and Karen Murray

N.E.C. Trophies

Larry and Meryl Nannis

Barry Needalman



## DONORS & CONTRIBUTORS continued



*Board Member Jeff Swartz and his wife Heather,  
CJP Vice President Gil Preus and Jayne Lampert*

Network For Good  
 Peter and Hildy Neumann  
 John and Evelyn Neumeier  
 Marvin and Cyd Ostrovsky  
 Zipora and Sanford Ostroy  
 Alan Paster and Lois Bienstock  
 Rick and Robyn Paster  
 Lewis Pearlson  
 Edna Perlmutter  
 Fred and Joanne Pike  
 Bari and Charles Popkin  
 Wesley Potter and Mary Collins  
 Glenn Pransky and Terry Snyder  
 Elaine Radis, Tim and Lois MacDonald  
 Mark and Joanne Raider  
 Jack and Alice Rich  
 Diane Ripstein  
 Lawrence Rizman  
 Gail Rosenberg  
 Joel and Bonnie Rosenthal  
 Rabbi Donald and Francine Rossoff  
 Alice Rotfort  
 Linda Roth  
 Kathryn and Jason Rothman  
 Sandra Rothschild  
 Barry and Melva Rowe  
 Royal Cleaners and Tailors  
 Jerry Rubin  
 Joseph and Miriam Rubinovitz  
 Peter Sacks and Debbie Jacobs  
 George Salah  
 Lawrence and Jane Salk  
 Marvin Sandler and Lila Gofstein

Julie Sarly  
 Amy Schectman and Mitchell  
 Rosenberg  
 Albert and Edna-Mae Schneider  
 Elizabeth Schrayner  
 Joel Schulman and Nancy Berkowitz  
 Schulman  
 Marc and Debra Schultz  
 William and Elizabeth Seaver  
 Alex and Autumn Sendzik  
 Bruce Shackleton and Elizabeth  
 Fineberg  
 James and Rosalie Shane  
 Susan Shapiro  
 Barbara Share  
 Mark and Irina Shklovsky  
 Daniel and Diane Shusman  
 Gary Shuster  
 Lynn Shyevitch  
 Andrew and Sharon Silverman  
 Ross and Amy Silverstein  
 Leonard and Gail-Ann Simon  
 Sharon Siwec  
 Kelly and David Smith  
 Maura Smotrich  
 Ross Smotrich  
 Robert and Carol Snider  
 Linda Sohn  
 Rebecca Sommers  
 Herb and Judy Spivak  
 James Statman and Amy Ansell  
 Johanna Staveley  
 Carol and Ted Steinman

Mel and Karen Stoler  
 Richard Stone and Jane Brown  
 Mark Strehlke  
 Bernie and Laurie Student  
 Patrice and Gary Sutherland  
 Rivelle Sutton  
 Harvey and Rona Tananbaum  
 David and Lorraine Telegen  
 Liliana Templer  
 Vicki and William Ten Eick  
 Herbert and Brenda Thaler  
 Shari and Robert Thurer  
 Christine Tibor  
 Amy Tichnor  
 TierPoint, LLC  
 Tishler Family  
 Steven Tobias  
 Raymond and Darrel Tonkel  
 David Trimble and Jodie Kliman  
 Stephen Von Lichtenberg  
 WAITT  
 Michael and Carol Wasserman  
 Wayland Travel, Inc.  
 Hazem Wehbe  
 Bernard Weichsel  
 Stephen and Barbara Weiner  
 Mel Weinzimer  
 Irwin and Amy Weiss  
 Ronald and Deena Whitfield  
 James and Laura Wilner  
 Jeffrey Winer  
 Wingate at Sudbury  
 Jonathan and Beth Winograd  
 Arnee and Walter Winshall  
 Raphael Wolf  
 Alice Wolfe  
 Karen and Mark Wolfson  
 Richard and Linda Wolk  
 Marion Wollmeringer  
 Dina Wosk  
 Xanadu Yoga  
 Saima Yunus  
 Jeffrey and Alisa Zaref  
 Beverly Zibrak

Lawrence and Annette Ziegler  
 Joseph Zipkin

.....

### Under \$100

Karen Abraham  
 Barry and Marjorie Afergan  
 The Ahn Family  
 Stephen Allard  
 Amazon Smile  
 Amsterdam Falafelshop  
 Seymour and Irma Andrus  
 Katy Archibald  
 Fanya and Nokhum Averbukh  
 Eileen Avers  
 Robert and Sharon Ayres  
 Maria Bachman  
 Kenneth Backaler  
 Amanda Badolato  
 Arkady Barenboym  
 Kay Barned-Smith  
 Maura Bates  
 Rebecca Bates  
 Burton and Muriel Baum  
 Inge Baye  
 Phil Benjamin and Melinda Milberg  
 Joan Berlin  
 Marvin Bernstein  
 Morton and Judith Birnbaum  
 Irwin Blumer and Lynne Beattie  
 Phyllis Blumsack  
 William and Linda Blumsack  
 Merle Bombardieri  
 Irma Bookman  
 James Brady  
 Amy Rubin Brickman



*Former Board President Aron Ain with  
his wife Susan*







*Ellen Jawitz and Rob Leikind with Board Member Karen Tichnor and her husband Michael*

Gerry and Helen Brody	Arthur and Lois Finstein	Rachel and Steven Gorelick	Boris and Tatyana Kagan
Jeff Brown and Nancy Engelhardt	David Fixler and Phyllis Halpern	David Goudreault	Robin Kahn
Anne Carballo	Christine and Nancy Fliesler	Priscilla Gould	Eli Kalaora
Carrie Carrizosa	Gary Forman and Laurie Glass	Christian Greco	Tammy Kallman
Corinne Castano	Marjorie Fox	Barbara Green	Lisa Kantor
Susan Castillo	Stephen and Rosalie Fox	William and Joyce Green	Barbara Kaplan
Harvey and Priscilla Chafitz	Mimi Freed	Diane Greenberg	Robert and Helen Kaplan
Adrienne and Alan Chanin	Julie Freedman	Fred and Barbara Greenberg	Charles and Jill Katz
James Cinamon	Neil and Carole Frieband	Marvin Greenberger	Jen and Jon Katz
Lawrence Clifford	Jay and Rosalie Frolick	Gertrude Greenman	Sylvia Katz
Morton and Marlene Cohen	Kenneth and Arlene Fuchs	Martin and Rachel Greenstein	Bernice Kazis
Community Health Charities	Elkan and Zelda Gamzu	Carolyn and James Griffin	Leonid and Alla Kazyulin
George and Anita Clymas	Michael and Lorraine Garber	Melvin Gross	Samuel Kendall and Catherine Zusy
Daniel and Elizabeth Coffey	Diane Garrow	Nancy Grossman	Lisa Kimball
Lawrence and Meryl Dannenberg	Harold and Gloria Geller	Allison Groves	Randi Kirshbaum
Barry and Elizabeth David	Joy Gerber	Sylvia Ruth Gutmann	Toby Klebenov
Gary and Rhonda Davidson	Steven and Arlene Gilman	Darci Hanna	Ann Klein
Nicole and Warwick Davies	Herbert and Irene Ginsburg	Hanto Restaurant	Barbara Klein
Joyce Davis	Richard Glaser	Andrea Hasbrouck	Ann Kliman
Elizabeth Devine	Anita Gold	Paul and Karen Hegarty	Sergio Kogan
Robert and Annabel Dodd	Rabbi Neal and Heidi Gold	Seth Henslovitz	Ralph and Marlene Korenstein
Walter and Micki Dore	Arthur and Marilyn Goldberg	Marc and Diane Homer	Beverly Koritzky
Susan Dubin	Jeffrey and Jacqui Goldberg	Harold and Paula Homonoff	Dina Kovar
Roy Einhorn	Jerry Goldberg	Phillip and Dianne Honig	David and Norma Kramer
Lewis and Mindy Elias	Norman and Sheila Goldberg	Robert and Caroline Horgan	Joel and Dana Kramer
Stephen and Sharon Engler	Nelson and Marjorie Goldin	Susan Howards	Jill Kraus
Elizabeth Epstein	Priscilla Golding	Ronald and Debby Iken	Stephen and Peni Kraus
Stephen Epstein	Lester and Sandra Goldstein	Ed and Karen Ingerman	Sophie and John Krentzman
Sema and Michael Faigen	Nellie and Benjamin Goodman	Ellen and William Jagher	Ken and Karen Krowne
Doris Feinstein	Peter Goodman	Anita Jamieson	Laura Kubzansky
Norman and Rosalind Finkelstein	Joyce Gordon	Parviz and Fay Janfaza	Selma Lait



## DONORS & CONTRIBUTORS continued

Ronald and Carole Lechan	Leslie Meltzer	Fayanne Riegelhaupt	Joanne Sostilio
Judy Leerer	Marshall and Margie Menachem	Muriel Stern Riseman	Marc and Jane Spigel
Michael and Roberta Leis	Harriet Merkowitz	David and June Rokoff	Amanda Stander
Irwin and Marcia Less	Phyllis Metzger	Myron Rosenberg	Claire Stearns
Deborah Lesser	Mitch and Marsha Mirkin	Solomon Rosenberg	Lee and Candace Steingisser
Alice Lester	Allah Mohamed	Richard Rosenblum	Leslie Stern
Michael and Tamara Lev	Misti Munster	Scot and Denise Rosenblum	Gregory Stoller
Lois Levick	David and Ellen Murachver	David and Marilyn Rothberg	Bill and Wendy Stone
Paula Levine	Kaitlin Nagle	Marcia Rowe	Linda and William Strayhorn
Diana Levinson	Irma Napoleon	Pauline Rozowsky	Stephen and Jane Sugarman
Myrna Levy	Martin and Edna Nichols	William and Evelyn Rubin	James and Marge Sunners
Sue Lewis	Harriet and Kenneth Nirenstein	Anne Ryan	Ross and Edna Supnik
Barbara Lianides-Chin	Teresa Omar	Sara Salomon	Jodi Swartz
Pearl Libenson	Amy Palmer	Jeff and Barbara Sands	Lisa Tabenkin
Risa Lifshatz	Leonard Paris	Lori Saslav	Adam Taylor and Michelle Weiner- Taylor
Michelle Limaj	Robert Paysnick	Howard and Linda Schiffman	Roberta Taylor
George and Ellen Lipka	John and Helene Pell	Andrei and Liliane Schor	Meghan Thompson
Janis Lippman and Ellen Grubert	Pfizer Foundation	Miriam Schultz	Lori and Jordan Tishler
Mara Littman	Matching Gifts Program	Alan Schwartz	N.J. and J.P. Tobey
Alice LoCicero	Jane Piercy	Ann Schwartz	Steven Tobolsky
Martin Loria	Lisa Plato	Jeff and Kim Schwartz	Roberta Unger
Robert and Esther Lynn	Janet Proctor	Phil and Susan Schwarz	Bob and Judi VonDohlen
David Maimon and Tracey Ross	David and Rose Raduziner	Harold Schweitzer	Arthur and Gail Wald
Daniel and Ellen Mainzer	Stephen and Nelly Rathmill	Betsy Selfo	Todd Wallack
David Manchester	Margery Ratner	Rachel and Mark Seliber	Harvey and Joyce Wallenstein
Laurence and Marlene Marsh	Jackie Regales	Nahed Shahadi	Melvin and Harriet Warshaw
Philip Mason and Jacqueline Horwitz	Ravit Reichman	Inna and Victor Shanson	Rosalie Weener
Natalie Matus	Ruth Riceman	Eugene and Elaine Shapiro	Howard and Doris Weinberg
Ann McCarthy	Andrea Richman and Michael Shulman	Gail Shapiro and Gilbert Wolin	David Weinhaus
		Cavita Sharma	Robert and Tamara Weiser
		Martin and Carol Shulman	Barry and Sheila Wieder
		Joel and Elaine Shwimer	Jill Winitzer
		Susan Siegel	Roberta Winitzer
		Elaine Silberman	Warren and Nancy Winnick
		Carol and Peter Silbermann	Manuel Witt
		George and Ilene Silver	Shirley Woods
		Nancy and Ira Silver	Edwin and Barbara Yarckin
		Ginny and Jeffrey Simon	Fraida Yavelberg
		Marsha Slotnick	David and Terry Yoffie
		Hannah Smotrich and Michael Barr	Arnold and Debra Young
		Carolyn Snider	
		Merle Glee Snyder	



*Board Member Barbara Schultz and her husband Andrew*

In addition to the donors listed herein, we are grateful to the many donors who wish to remain anonymous.

Gifts as of 9/15/17



# BOARD OF DIRECTORS

## INTRODUCING NEW BOARD OFFICERS & DIRECTORS:



**President**  
David Milowe



**Vice President**  
Allison Kates



**Vice President**  
Sari Anne Rapkin



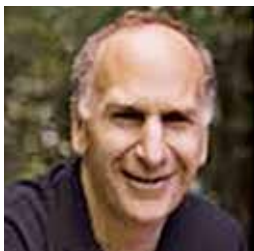
**Treasurer**  
John Herrera



**Director**  
Chase Carpenter



**Director**  
Ari Freisinger



**Director**  
Jay Gainsboro



**Director**  
Barbara Shapiro

## OFFICERS

President David Milowe, Canton  
Vice President Allison Kates, Wayland  
Vice President Sari Anne Rapkin, Needham  
Vice President Josef Volman, Newton  
Vice President Michelle Wilen, Ashland  
Secretary Ian Rubin, Wayland  
Treasurer John Herrera, Newton Highlands

## DIRECTORS

Peggy Barry, Dartmouth  
Chester Black, Wayland  
Jodi Bring, Natick  
Chase Carpenter, Cambridge  
F. Javier Cevallos, Framingham  
Allan Chasen, Wayland  
Gary Dennis, Wayland  
Robert Fields, Southborough  
Lauren Fishman, Natick  
Kevin Foley, Framingham  
Ethan Freishtat, Needham  
Ari Freisinger, Boston  
Jay Gainsboro, Framingham  
Leslie Gerber, Holliston  
Penny Glassman, Ashland  
Sharon Goldstein, Natick  
Richard Henken, Sudbury  
Ezra Levine, Sudbury  
Deborah Merkin, Wellesley  
Paul Rosenberg, Wayland  
Kerrie Rothschild, Natick  
Janet Sanders, Boston  
Barbara Schultz, Sharon  
Barbara Shapiro, Needham  
Tamar Steinman, Natick  
Jeffrey Swartz, Weston  
Karen Tichnor, Wayland  
Robin Welch, Framingham

## ACTIVE PAST PRESIDENTS

Aron Ain, West Newton  
Robert Band, Framingham  
Alan Bernstein, Sherborn  
Judith Bernstein, Sherborn  
Carol Chudnofsky, Sudbury  
Kathryn Covarrubias, Framingham  
James Gordon, Framingham  
Louis Kates, Framingham  
Roberta Molliver, Framingham  
Judi Raphael, Hopkinton  
Marcia Rosenberg, Wayland  
Lester Schindel, Framingham  
Reva Tankle, Holliston

## MANY THANKS TO...

It is with abundant gratitude that we thank outgoing Board President **Louis Kates**, Vice President **Melissa Roiter**, Treasurer **Dan Finn**, and Directors **Adam Russo** and **Robin Wolk** for their generous service and for helping JFS stand up for those left behind.



# STAFF

## LEADERSHIP TEAM

Marc Jacobs	Chief Executive Officer
Lino Covarrubias	Chief Operations Officer
Rosemarie Coelho	Director of Performance Management
Amanda Coughlin	Director of Program Operations
Jayne Lampert	Director of Development
Diana O'Brien	Director of Family Assistance
Lucia Panichella	Director of Youth and Immigrant Services
Elizabeth Ramirez-Grzela	Director of Finance
Malka Young	Director of Communal and Elder Services
Stephanie Rohr	Program Specialist and Inclusion Coordinator



*Stephanie Rohr, recipient of the Lebold Award*

## CHILDREN AND FAMILIES

**Includes:** Adoption Choices, Citizenship Assistance and Resettlement, Jewish Family Network, Reducing Achievement Gaps and other community programs

Christopher Ahearn	Heather Flugrad	Nicole Ramshaw
Nancy Amstutz	Amanda Glynn	Nancy Rotatori
Rand Chaqmaqchee	Nermin Helaly	Jennifer Slemrod
Sophie Cohen	Kayla Hopkins	Jane Spitzer
Keri Ann Crandall	Linda Lacy	Jenny Swett
Dale Eldridge	Chastity Lovely	John Witherow
Josilene Florenzano Ramos	Jenna Maxfield	Raquel Woodard
Kara Florian	Anna Michelson	Daniel Woodward



*Diana O'Brien*



*Dale Eldridge celebrates 30 years at JFS with Raquel Woodard*

**My 30th anniversary here at JFS has been an amazing experience building over 900 families through adoption!**

—Dale Eldridge,  
Coordinator, Adoptive Parent Services





From top left: Josiah Ihechukwu, Xi Feng, Manuel Sayán, Karen Reitze, Justo Rosario-Lebrón and Ginette Mayas-Samwel

## FAMILY ASSISTANCE

**Includes:** Family Assistance Network, Healthy Harvest, Information and Referral Network, Pop-Up Clothing Closet, Lucy and Joe's Food Pantry and Ready for Success

Maryann Cardani

Shoshana Savitz

Marissa Zwelling

Malvina Drummond-Goldfarb

Myrna Winter



Malvina Drummond-Goldfarb

## ELDER AND FAMILY CAREGIVING SERVICES

**Includes:** Allies in Aging JFS Elder Care Solutions, Friendly Visitors, Homecare, JFS Healthy Aging, Healthy Partners, Keshet and Keshet 13, Patient Navigator and other community programs

Merrill Adler

Natalie Guenoune

Leah Orlinsky

Annette Alderman

Esther Heimberg

Lesley Orlinsky

Karen Block

Judy Herzig-Marx

Karen Reitze

Elizabeth Chalfin

Wen-Ying Ju

Abrielle Salloway

Yu-Pei Chang

Joni Lebov

Ryan Schwartz

Xi Feng

Mala Maurer

Laila Vehvilainen

Jaime Fitts

Ginette Mayas-Samwel

Tao Yuan

Ruth Grieco



Malka Young



## STAFF continued



*Lucinda Tejada celebrates becoming a U.S. citizen with Lino Covarrubias and Dámaris Medina-Hernández*

## HOMECARE

Amazing Bakkabulindi	Elvia Morales
Naysa Barbosa-Acosta	Frederick Owusu
Feliciano Carmona	Dolores Paredes
Olga Cordero	Pura Pimental
Ruth Cuellar	Ada Pineda
Michel Domínguez-Tatis	Josefina Ramírez
Josiah Ihechukwu	Irma Rodas de León
Monica León	Justo Rosario-Lebrón
Maxima Martínez	Miriam Samayoa
Susan McKinnon	Manuel Sayán
Dámaris Medina-Hernández	Scarlyn Suárez
Felicita Mejía	Joselina Suriel
Keila Mieses	Lucinda Tejada

“ I’m extremely proud of the mission focus our staff has day in and day out. ”  
—Lino Covarrubias, COO



*Risa Lifshatz, Elizabeth Ramirez-Grzela and Wendy Kogan*

## BUSINESS OFFICE/ADMINISTRATION

Natella Dayn	Risa Lifshatz
Rosamond Geller	Barbara Mines
Joanne Kane	Gianna Zirpolo
Wendy Kogan	



*Olga Cordero and Josefina Ramírez*

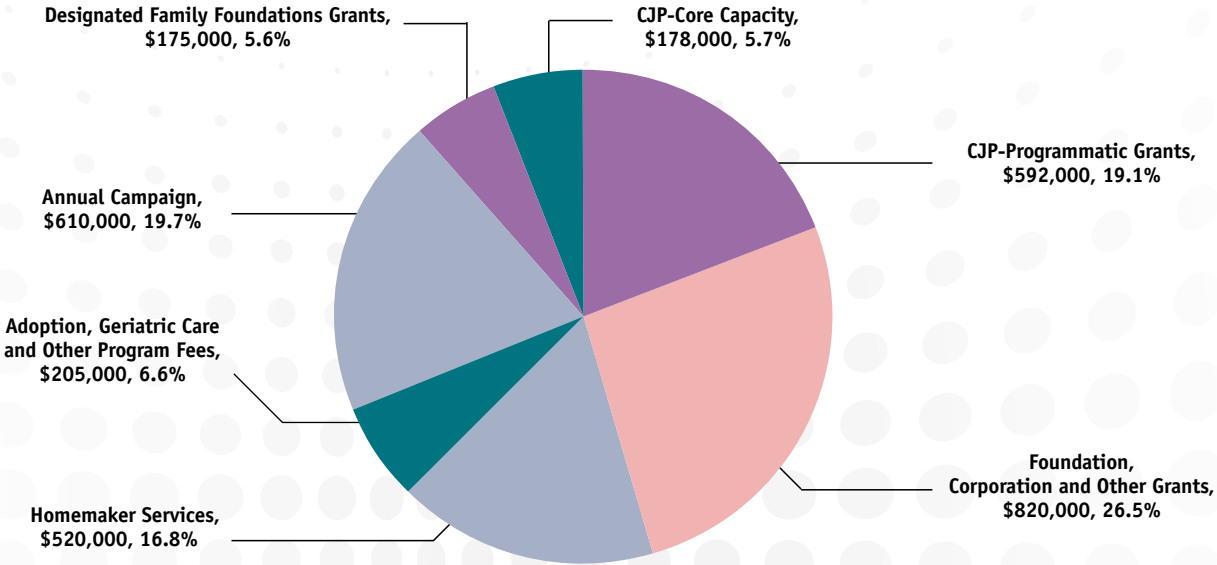


# Jewish Family Service of Metrowest

FY 2017

Cash Receipts—\$3,100,000

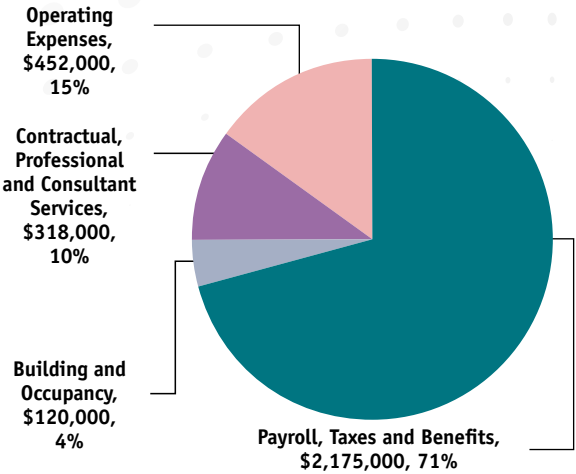
Forecast as of September 1, 2017



FY 2017

Cash Disbursements—\$3,065,000

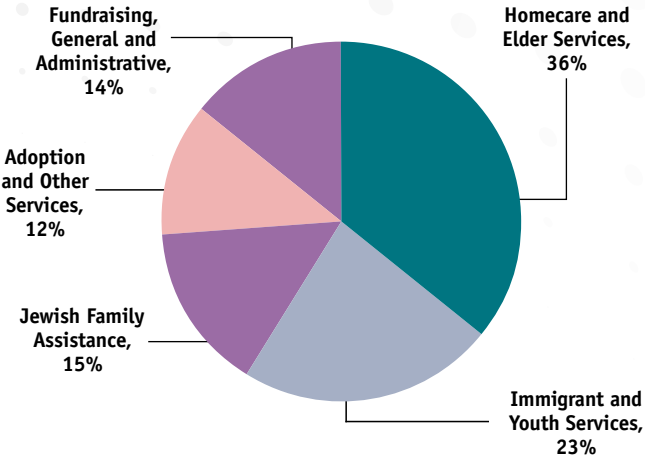
Forecast as of September 1, 2017



FY 2017

Expenditure Allocations—\$3,065,000

Forecast as of September 1, 2017



*Jewish Family Service of Metrowest provides vital social, health and community services to alleviate suffering, enhance lives and support people in need.*



Guided by the Jewish traditions of social responsibility and compassion, we are dedicated to supporting people of all ages and backgrounds, treating them with respect and dignity, helping them maintain and sustain healthy lives and independence, providing culturally relevant services and working with community partners to broaden our impacts.

## JEWISH FAMILY SERVICE OF METROWEST

**PHONE:** 508-875-3100 **FAX:** 508-875-4373 **EMAIL:** info@jfsmw.org

475 Franklin Street, Suite 101, Framingham, MA 01702 **www.jfsmw.org**



Stay connected



Report to the Community courtesy of CommCreative  
[www.commcreative.com](http://www.commcreative.com)

COMMCREATIVE